



# The Ruby

*The Ruby* is a great affordable option, perfect for a first home or for downsizing. This plan includes two bedrooms and two bathrooms. The open kitchen, dining, and living areas are ideal for entertaining. Find more usable space in the standard unfinished full basement. Or, eliminate the basement for cost savings.

Main Floor: 1040 sq/ft

Basement: 1040 sq/ft

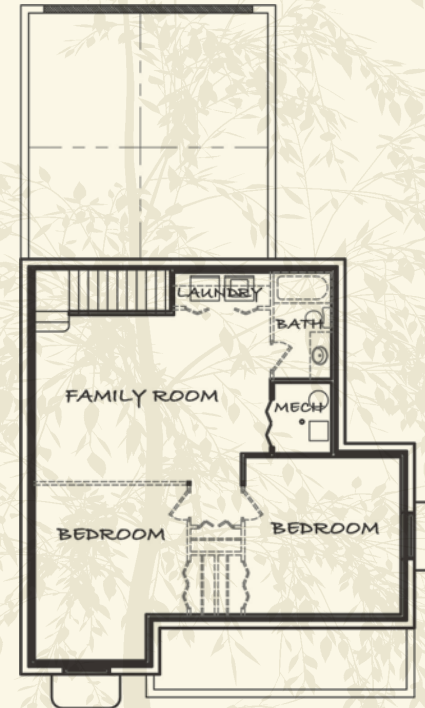
Total Square Footage (with finished basement): 2080 sq/ft

*Options not always included in standard price.*

*Plans are subject to change.*



A McCall Homes  
Neighborhood



(Optional Basement Finish)